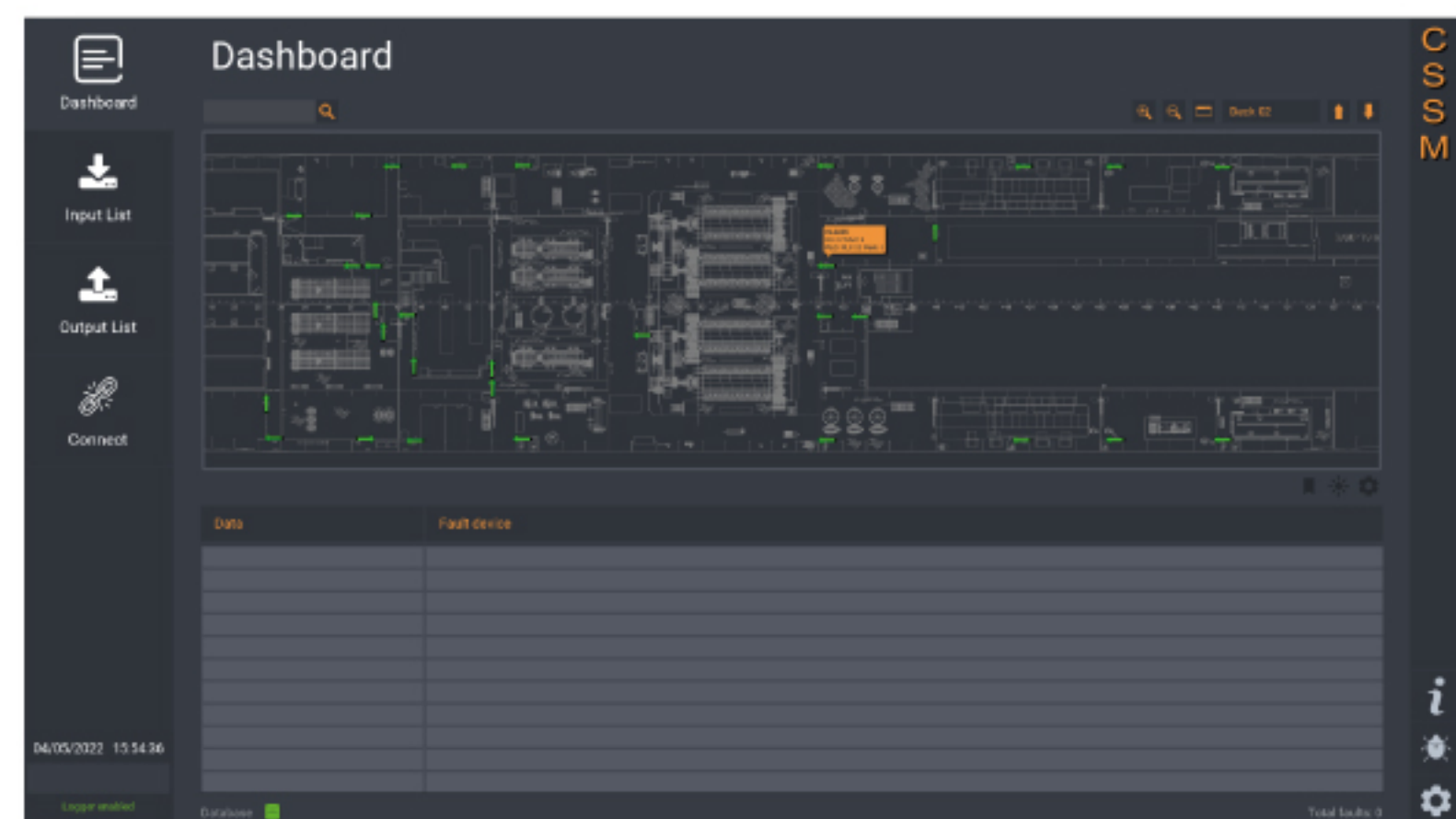


Cabin Safety Support Management



The **HI-CSSM** (Cabin Safety Management) system is a monitoring and management system for **HI-CSS** system, could be interfaced with any control system (such as SMCS or ESD or FDS), by ModBus communication or digital inputs.

Conceived as an integration to safety systems, **HI-CSSM** allows you to manage the single **HI-CSS** for any signage, such as the lighting in case of black-out, or the red light signal in case of emergency.

Developed with marine certified PLCs, the **HI-CSSM** system guarantees optimal stability and high performance.

The configuration software, developed with "user-friendly" technology, allows you to program easily and immediately, every single **HI-CSS** device.

The **HI-CSSM** system provides for "Single", "Redundancy" or "S.R.t.P" installation.

In addition, the **HI-CSSM** system can be connected to different operator work-stations for monitoring **HI-CSS** devices.



FEATURES:

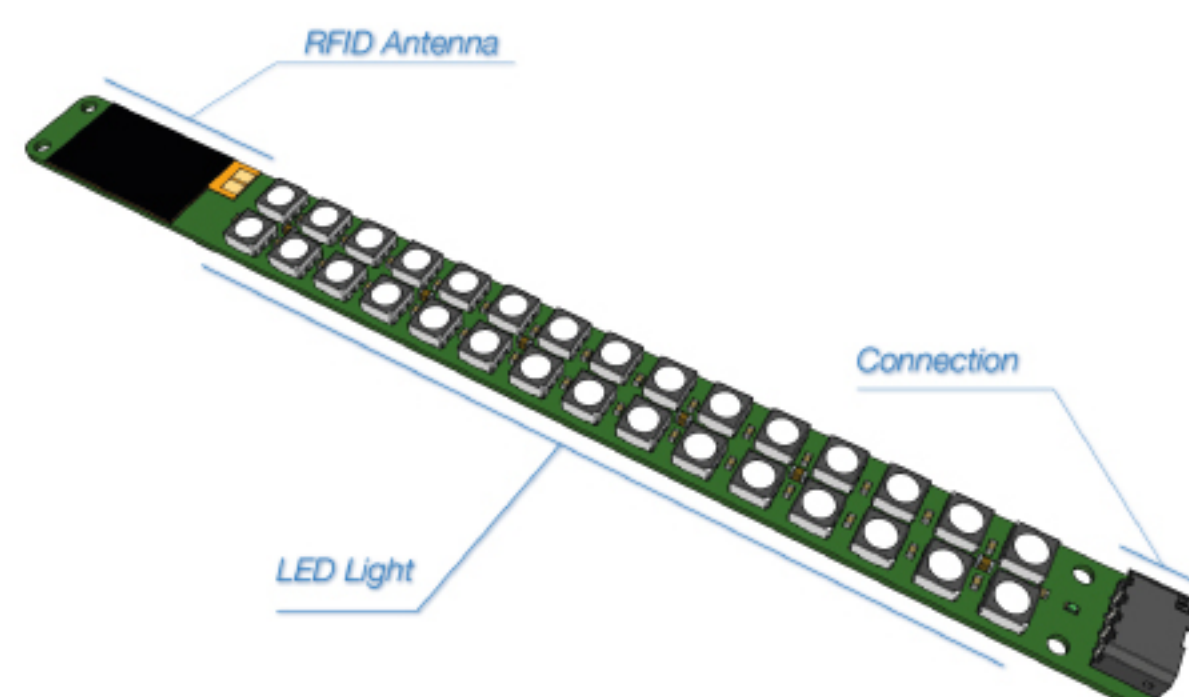
- could be interfaced with any control system.
- Interface "user-friendly".
- Simple and intuitive configuration software.
- High response performance.
- Multiple WorkStations.
- Complete single **HI-CSS** management.

Cabin Safety Support Management

HI-CSS TECHNOLOGY

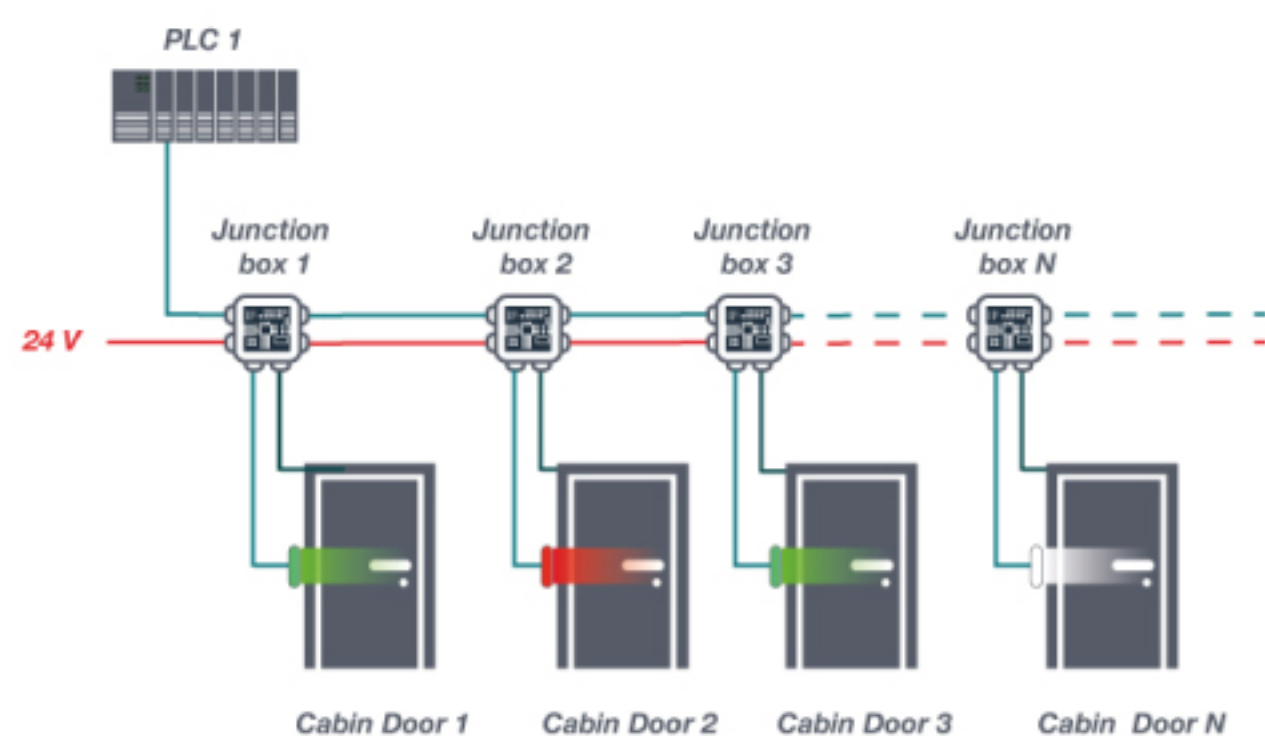
The **HI-CSS** handle is equipped with a technology that, by the "CSS Bus", it allows it to be implemented in the **HI-CSSM** system.

This technology allows you to configure the management of every single **HI-CSS** for any light signal customer request. Implemented in the **HI-CSSM** system, the single **HI-CSS** it can be constantly monitored.

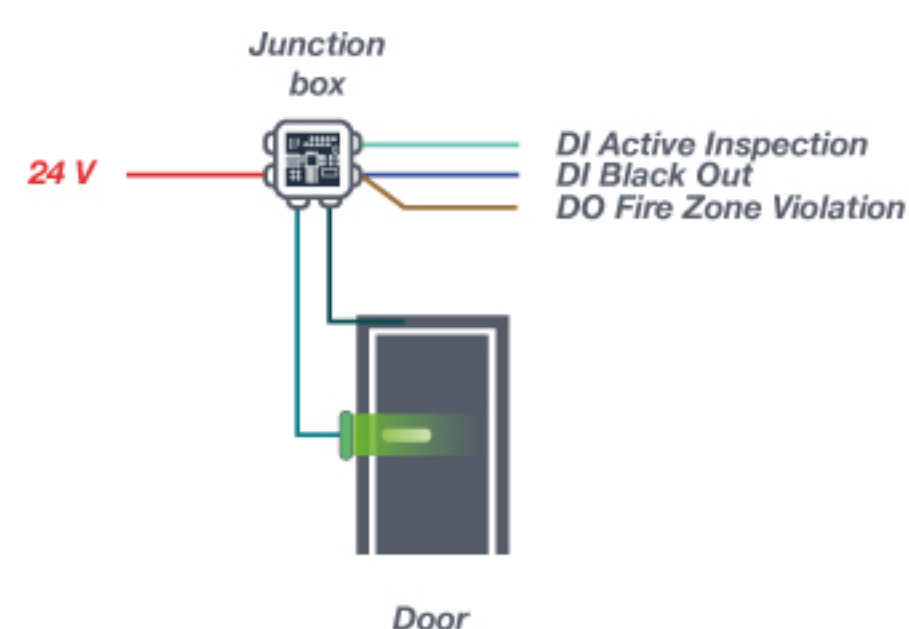


HI-CSS can also be used in "Standalone" mode.

Each single device is equipped with several Digital Inputs, this allow to **HI-CSS** can be configured and work autonomously.



Layout network system



Layout StandAlone system

Cabin Safety Support Management

System

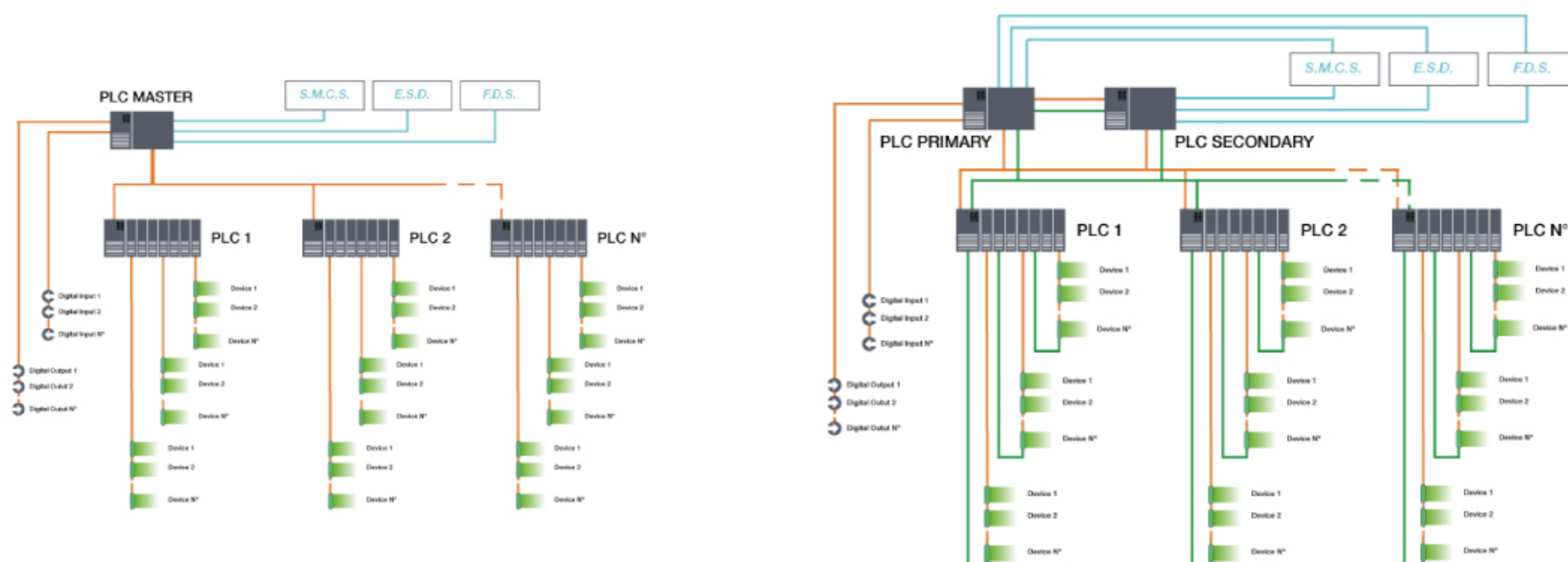
The **HI-CSSM** system provides to configuration and testing functions of the RGB color logic management, through its own protocol communication "CSS Bus", for a set of **HI-CSS** handles.

The system is composed of one or more "Master PLC" for the management of the INPUT registers, and "Zone PLCs" for the management of each **HI-CSS** handles.

Regards the configuration of logics OUTPUTs activation, following the INPUT status, this software uses the "Interface modules" (MOD), created by the user, which allow you to connect each individual INPUT state to each OUTPUT state of the single **HI-CSS** handle.

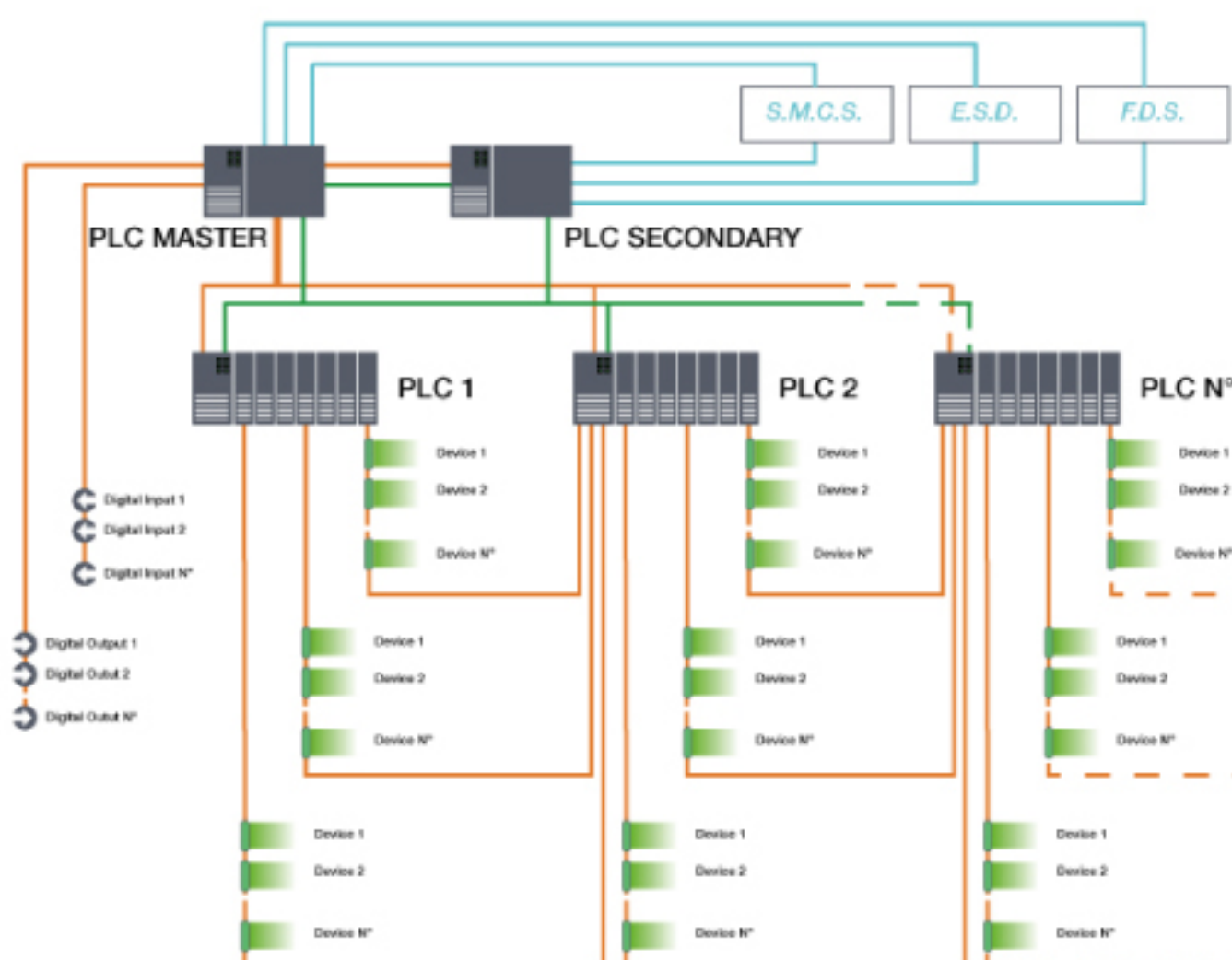
Thanks to its simplicity of configuration, **HI-CSSM** allows the capillary management of each single **HI-CSS** device

The **HI-CSSM** system provides for "Single", "Redundancy" or "S.R.t.P" installation.



Layout Single network

Layout Redundancy network



Layout S.R.t.P network

Cabin Safety Support Management

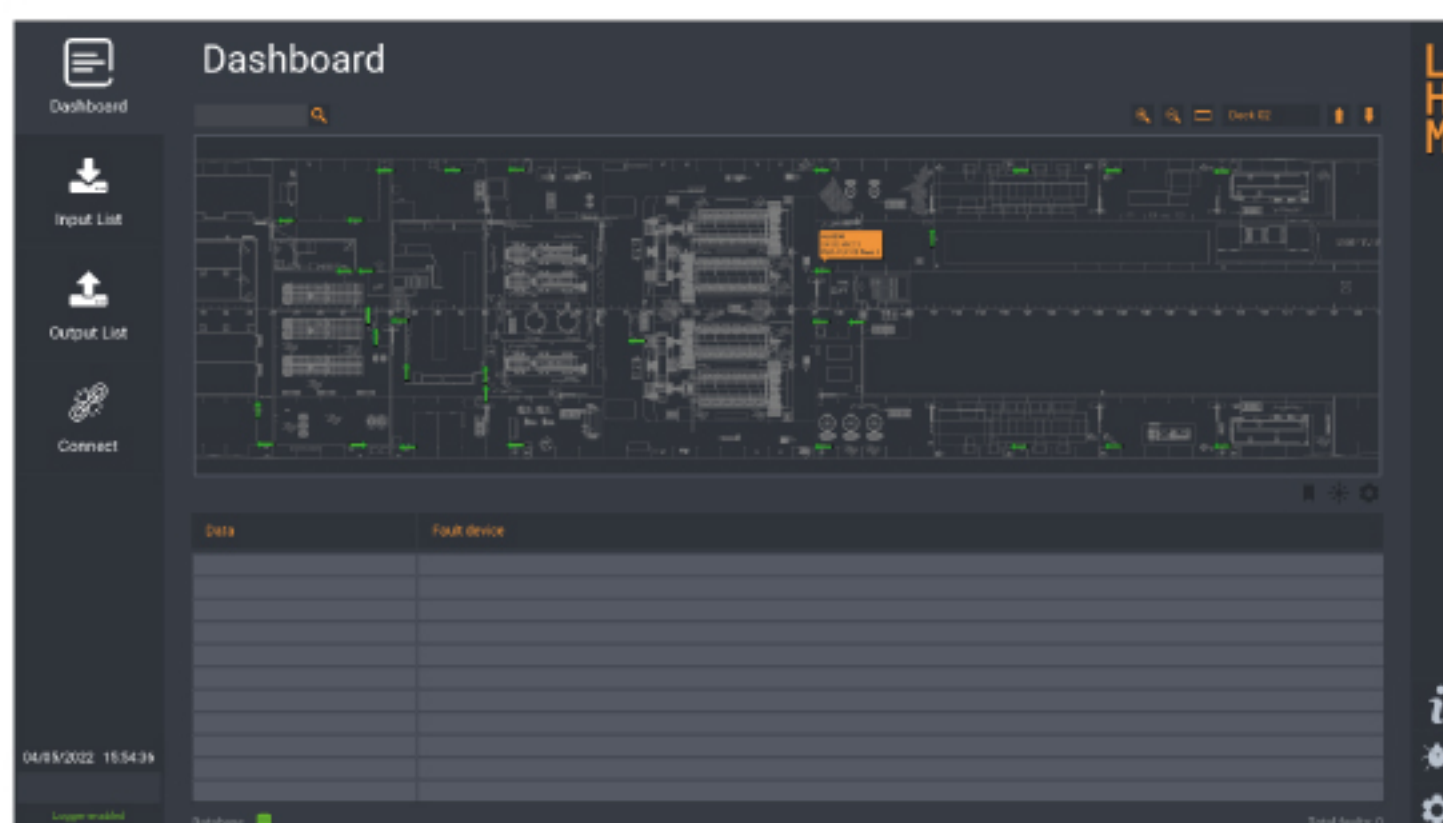
Human Machine Interface

The **HI-CSSM** system can be interfaced to its supervision HMI, in order to monitoring each **HI-CSS** device correct functionality.

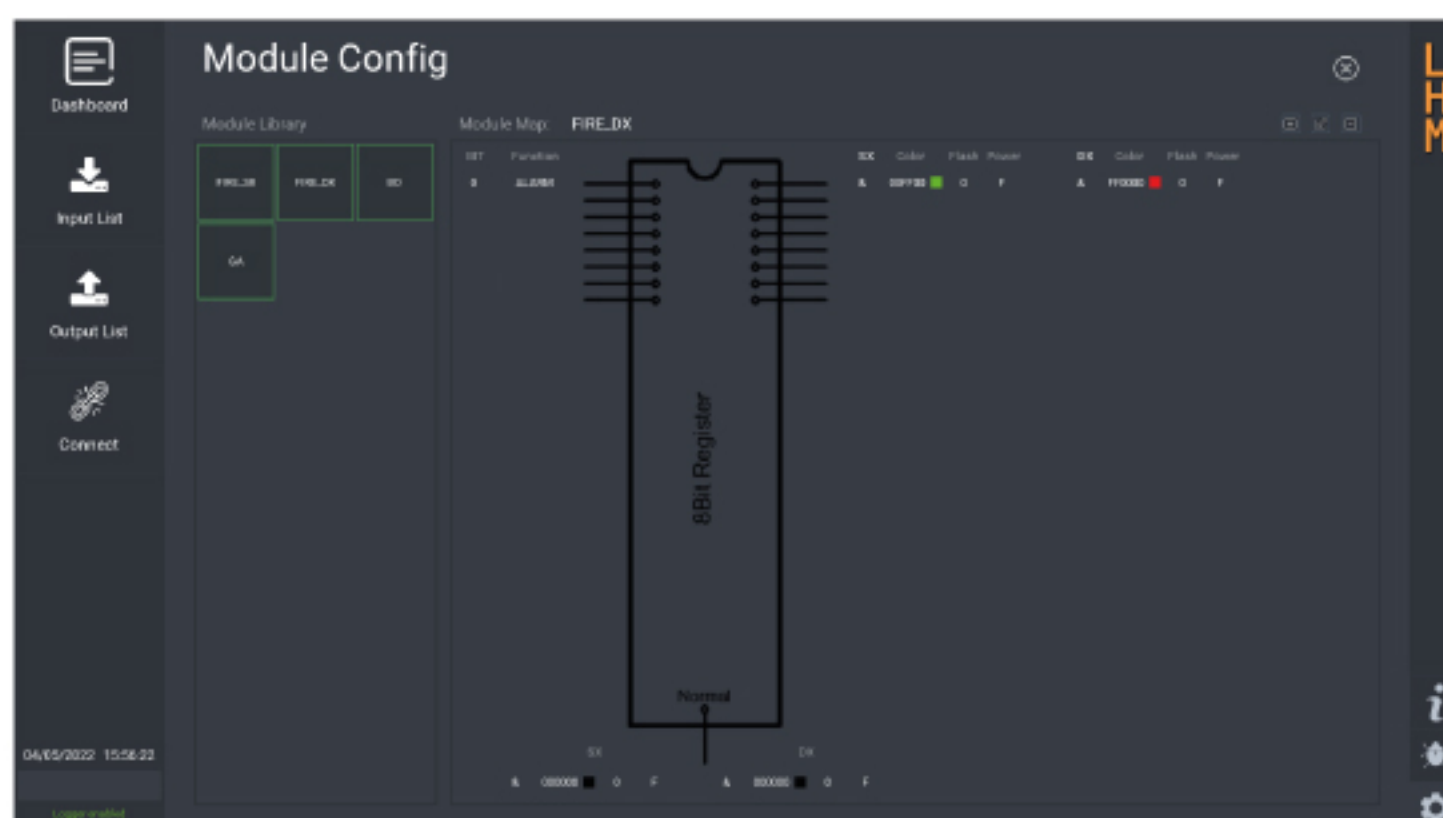
The monitoring system can provide installation of different WorkStations to be positioned in different "Safety Areas".

The supervision software gives the possibility;

- Monitor every single device **HI-CSS** .
- Configure the operation of each individual device.
- Monitor communication with other systems(S.M.C.S, E.S.D., F.D.S. ecc...).
- Monitor the correct functioning of the individual PLCs.
- System operation and configuration reports.
- Functionality test of OSSH devices.
- LOG functionality .



The system simplicity, allows an easy configuration of each single **HI-CSS** device, thanks to the creation of "Interface modules" (MOD). These modules allow the operation of the devices according to customer's requests.



Cabin Safety Support Management

CONTACT

HI-CSS

Mednarodni prehod, 6
Vrtojba
5290 Šempeter pri Gorici
Slovenia

Administrator Manager

Andrea Ulian

mobile: **+39 347 0081555**

email: **andrea.ulian@hi-css.com**

Sales Department

Roberto Gastaldo

mobile: **+39 347 5110014**

email: **roberto.gastaldo@hi-css.com**

Technical Department

Piero Crasnich

mobile: **+39 347 3201470**

email: **piero.crasnich@hi-css.com**